

# Te Waka o Aoraki Regional Sprint Championships 2021

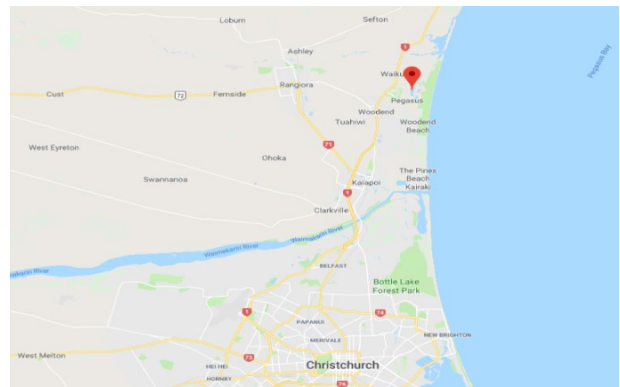
Saturday 11 December - Lake Pegasus Christchurch

## Event Pānui / Information

E ngā waka, e ngā reo, e ngā tai e whā o Te Waka o Aoraki  
Nau mai, tauti mai ki te whakataetae waka ama o te motu nei ki tēnei tau  
Kei raro i te maru o Maukatere, te taha hoki o te pā tāwhito o Kaiapoi  
Rātou ki a rātou e ngā mate kuawheturangitia, tātou ki a tātou e ngā kanohi ora  
Nō reira, tēnā koutou, tēnā koutou, tēnā tātou katoa

Te Waka o Aoraki welcome paddlers from around the region to the 2021 Te Waka o Aoraki Regional Sprint Championships to be held at Lake Pegasus on Saturday the 11<sup>th</sup> of December 2021. This is the qualification event for paddlers wishing to race in a W1 and/or the Regional W12 at the 2022 Waka Ama National Sprint Championships to be held at Lake Karapiro from 16<sup>th</sup> - 22<sup>rd</sup> January 2022.

### Venue – Lake Pegasus



We will again be heading to Lake Pegasus located 20 minutes north of Christchurch. Registration will be set up at the start finish line at the bridge end of the course where Infinity Drive turns into Lakeside Drive.

### Important Dates

- |                             |                           |
|-----------------------------|---------------------------|
| • 1 <sup>st</sup> October   | Event Pānui Released      |
| • 2 <sup>nd</sup> October   | Entries Open              |
| • 29 <sup>th</sup> November | Entries Close             |
| • 8 <sup>th</sup> December  | Draft Land Draw Published |
| • 10 <sup>th</sup> December | Final Lane Draw Published |
| • 11 <sup>th</sup> December | Race Day                  |

## Entry Fees and Age Divisions

---

- Juniors (19 years old or younger) \$5.00
- Seniors \$10.00
- Age Divisions Midget to Master 70

Note: Entry fee covers all racing in W1's and W6's

Note: Paddlers must be affiliated to NKOA ( <http://www.wakaama.co.nz/affiliationchecker> )

**Entries are to be made via the Waka Ama New Zealand Website with registration fees to be paid ahead of the event via your club. Please see your Club representative to sort out your entry.**

## Race Distances

---

- W1 500m and 250m
- W6 500m, 1000m and 1500m

## Indicative Programme – Saturday 12 December 2020

---

0800-0900	Registration and W1 Weigh in (fully rigged waka must weigh 16km minimum)
0900-1100	W1 500m
1100-1200	W1 250m
1200-1300	W6 500m
1300-1500	W6 1500m/1000m
1500	After Function Venue TBC

## Regional W1 500m and 250m Dash Representative Qualification Process

---

Each region has at least 4 entries in each age division for W1 500m events, and two premier men's and premier women's, and two J19 men's and women's entries into the W1 250m dash race for the WANZ Sprint Nationals. There are also additional places in the W1 500m events based on finalists from each regional from the previous year's nationals. Eg. 3 TWoA finalists = 4 + 3 = 7 entries for Nationals.

W1 500m qualifiers from TWoA will be decided at the regional event by placings in the W1 500m final of each division. Paddlers that cannot make the regional event, but who wish to be waitlisted for consideration of a W1 spot, must make contact with the TWoA President ahead of the event. You may then be allocated a spot if all other qualifiers from the regional event pass on their spot.

The W1 250 Dash race is the last event held at Nationals and is a one-off race with all regional representatives racing together. The premier men's and women's events are for all age divisions from Open to Master 70s. To align our regional event with the national event and due to limited lanes available at Lake Pegasus (six lanes for W1 races) - paddlers will get one race to set a time, and the fastest two times out of each gender in both the J19 and Premier divisions will qualify to be our regional 250 dash reps.

## Regional W12 Qualification Process

---

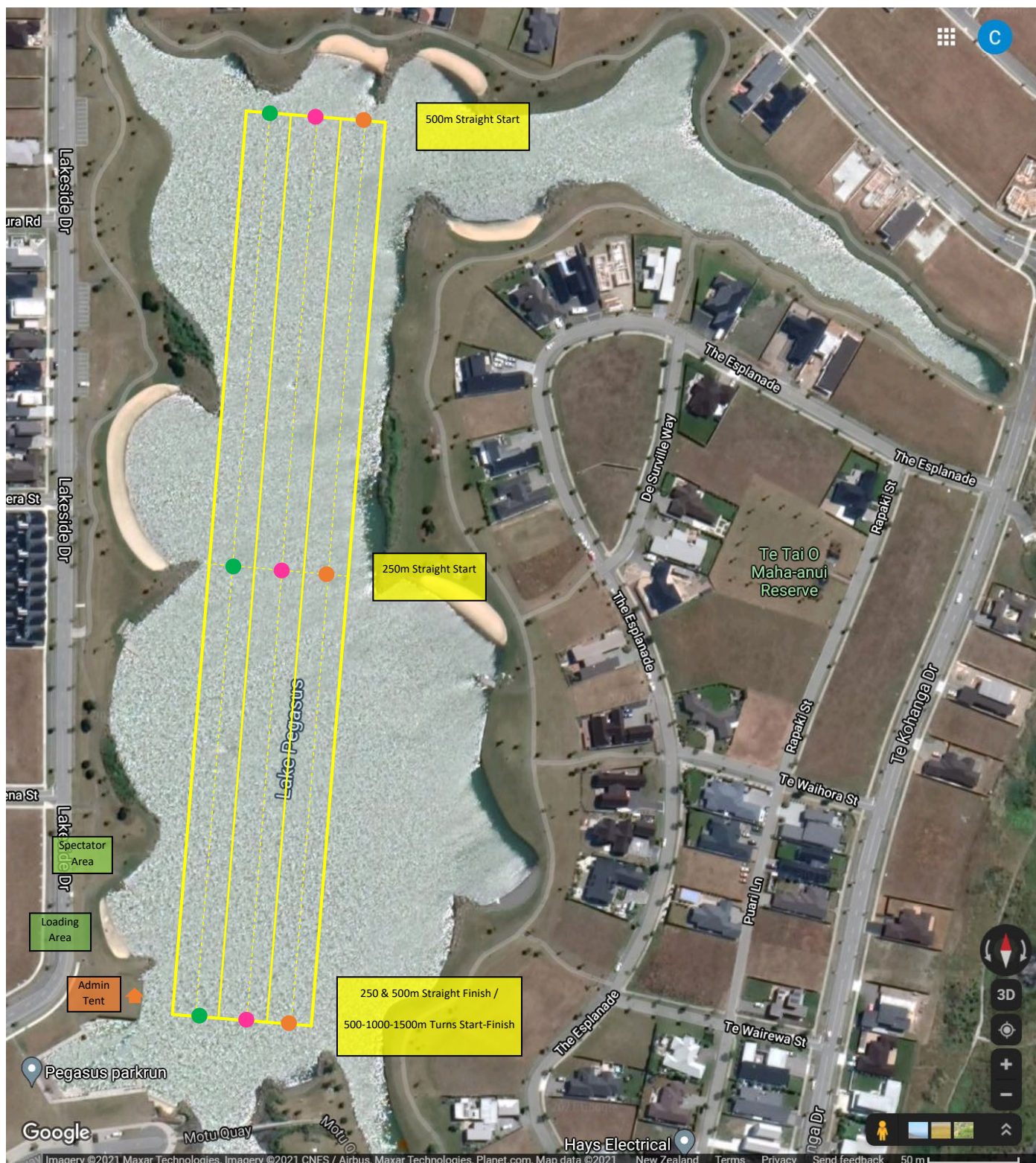
Each region also puts forward a men's and a women's Regional W12 team to compete at the Sprint Nationals. Qualification for these teams are based on paddlers competing in the **W1 250m Dash** at the TWoA Regional Sprints (across both the J19 and Premier divisions) – with the fastest 12 times from each gender making up the respective crews. In the event that a W12 Team cannot be made up from athletes who competed at the TWoA Regional Sprints, the TWoA Committee will seek and select athletes who are entered for the WANZ Nationals. The TWoA Committee will also select Captains for each Team.

## Notes

---

- Entries must be made via your club and fees paid ahead of the event.
- W6 canoes will be supplied by TWoA and W1 canoes must be supplied by paddlers and weighed.
- Clubs are expected to help with running our Region's event.
- You must enter the W1 250 Dash if you want to qualify for the Regional W12 Team.
- Questions or Enquires please contact the race directors Craig Pauling or Caleb Te Kahu

## Lake Pegasus Venue and Racecourse Map



The racecourse has 3 x W6 lanes (indicated by the coloured buoys which represent the middle of the lane) and 6 x W1 lanes (indicated by the dotted lines, with the buoys being the outside of each lane).

Waka are loaded and unloaded from the small beach between the Admin Tent and Spectator Area.

The 500m Straight Race Start Line is the Northern End of the Lake.

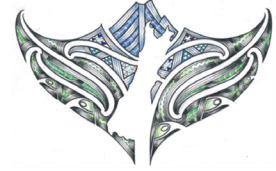
The 250m Straight Race Start Line (and turn race turning buoys) are in the middle of the lake.

The 250/500m Straight Race Finish Line and 500/1000/1500m Turn Race Start & Finish Line is near the Admin Tent at the Southern end.

Waka must stop and turn before the swing bridge at the Southern end of the lake, as well as at the beaches at the Northern end.

For more information about Lake Pegasus see:

<https://www.waimakariri.govt.nz/your-council/news-and-information/2016/lake-pegasus-the-things-you-need-to-know>



**EVENT WAIVER and AUTHORITY FORM**

**Te Waka o Aoraki Regional Sprints**

Team / Name \_\_\_\_\_ Club \_\_\_\_\_

Gade & Event (s) entered \_\_\_\_\_

**I/We declare that:**

1. My/Our accepted entry will not be transferred to another entrant.
2. In the event of any “act of God” conditions causing a cancellation of the event, my/our total entry fee is not transferable or refundable.
3. I/We acknowledge that there are risks involved with Waka Ama and fully realise the dangers of participating in an event such as this and fully assume the risks associated with such participation and my wellbeing during the event.
4. I/We understand and agree that situations may arise during the event, which may be beyond the immediate control of officials or organisers, and I/we must continually participate in a manner that does not endanger either myself/ourselves or others.
5. Neither the organisers, the sponsors nor other parties associated with the event shall have any responsibility, financial or otherwise, for any risk incident that might arise, whether or not by negligence, from any direct or indirect loss, injury or death that might be sustained by me/us or any other party directly or indirectly associated with me/us, from my/our intended or actual participation in the event or its related activities.
6. I/We authorise my/our name, voice, picture and information on this entry form to be used without payment to me/us in any broadcast, telecast, promotion, advertising, or any other way pursuant to the Privacy Act 1993.
7. I/We agree to comply with the rules, regulations and event instructions of the Te Waka o Aoraki Regional Sprints.
8. I/We consent to receiving medical treatment which may be advisable in the event of illness or injuries suffered during the event.
9. I/We confirm that I/we can swim 50 Metres/OR those that cannot swim 50 Metres will wear a PFD during the race.

***If Competitor is under 18 the Waiver must be signed by Parent or guardian. Please ✓ if so.***

Date	Paddlers full name	Signed	✓Parent/guardian signed.	Medical Conditions	Date of Birth